

Newsletter Winter 2017

Welcome to our Winter edition of the Martineau Gardens' Newsletter. If you're visiting the Gardens this month, keep an eye out for delicate-looking plants withstanding the harsh weather. In the winter garden you can see the deep lilac bead-like berries of *Callicarpa*; scarlet rosehips; the white—papery moons of honesty and, spotted just as we go to print, snowdrop shoots peeping through fallen leaves in the woodland. Being close to nature promotes well being. That idea is at the heart of what we do at Martineau Gardens.

If you care about children's environmental education, please share the good news about our expanding Education programme and encourage teachers to book a class visit to Martineau Gardens (see over for details). Renovating our Pavilion helps keep Martineau Gardens open and free for the people of Birmingham. We're looking forward to local social enterprise, the Jericho Foundation starting work soon to make the Pavilion watertight. Find out more here: www.martineau-gardens.org.uk/2016/12/refurbishment-update-2/

Caroline Hutton, Director

New Friends welcomed Reading this and not yet a Friend? Isn't it time you joined?! **Join online** via: www.martineau-gardens.org.uk/about-us/become-a-friend/



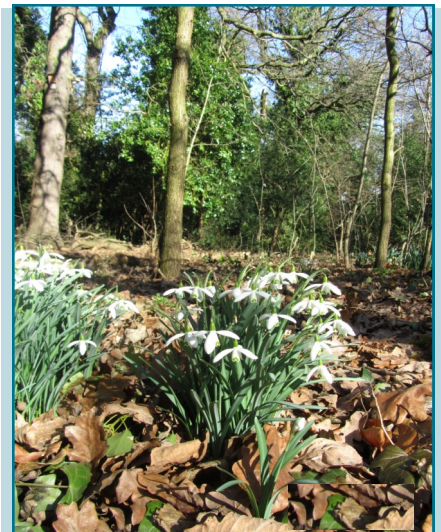
Winter in the Gardens

Whether we're squelching in the Gardens shrouded in mist or pruning shrubs in dazzling January sunshine, our Therapeutic Horticulture programme continues through these winter months. Being able to volunteer, to feel part of a team, exchange a joke or two, in the dark days of winter can make a big difference. Our sturdy team of Garden Volunteers have been busy

over the last few weeks: garden benches sanded and oiled; winter shrubs and fruit bushes pruned; plants and cuttings potted on; Jerusalem artichokes dug up and more. Therapeutic Horticulture couldn't continue without funding from Charitable Trusts like the Harry Payne Fund, (administered by the Heart of England Community Foundation) whom we thank for their recent donation.



Credit: S Swan



Coming soon, snowdrops in the woodland at Martineau Gardens

Diary Dates

Sat 22 April, **Big Dig Food Growing Event**, 2pm—4pm free entry

*Thurs 4 May, **Family MiniBeast Safari**, pre-book see website £5

* **Sats 6 & 13 May, Bee Keeping Courses**, pre-book see website £50

Sun 14 May, **Spring Event**, 11am—3pm, all welcome, Friends free entry

Sat 20 May, **Nettlefest**, 11am-6pm organised by SAB Permaculture, free entry

*Sat 17 June, **Storytelling Festival**, 11am—5pm

*Sat 15 July, **Summer Garden Party**, charity auction and raffle in support of Martineau Gardens pre-book see website £10

*Advance purchase recommended
Information and ticket links via:
www.martineau-gardens.org.uk/events

Open: Mon to Sat 10am - 4pm, except bank holidays. Entry is free except for special events.

What is Martineau Gardens?

Our Therapeutic Community Garden is looked after by Volunteers, many of whom have

mental health issues or learning disabilities. Hundreds of school children visit the Gardens to learn about science and the environment. Every year Birmingham people (now in their

thousands), visit the Gardens to enjoy its peace and tranquillity. We host events and courses and sell plants and produce.

Youngsters sleep out for homeless



A courageous band of children aged ten to twelve years old came to Martineau Gardens, to brave the elements of a dark November night to raise awareness and funds for Birmingham's youth homelessness charity, St Basils. The group built cardboard box shelters (equipped with their sleeping bags), they cooked food around a campfire and played games to keep warm. This is a subject close to our hearts. Some of our adult volunteers have been homeless, occasionally rough sleeping or are living in hostels. The event was a satellite sleep out event to coincide with the St Basils Big Birmingham Sleep Out.

Pictured above, children (and parents) from the Kings Heath and Moseley Woodcraft Group.

Thanks to you, we've bagged £5,000

The people's vote works! Our Therapeutic Horticulture project has been awarded £5,000 from a Tesco and Groundwork funding scheme, Bags of Help, raised from the 5p bag levy. Thanks to all who voted for us — we've been awarded the top level. On the crest of this wave, let's make the Co-op scheme work for us too – if you're a Co-op member, go online and choose us. More details are on our website:

www.martineau-gardens.org.uk/2016/09/co-op-supports-martineau-gardens/



*Stewart Holmes
(Therapeutic Horticulturalist)
with Garden volunteers
potting up in the Glasshouse*

Pledge for nature

Martineau Gardens is standing up for nature. We invite you to join us and Greener Birmingham in signing a pledge committing to protect the natural environment. We all need the natural environment to remain protected at a time when budgets for parks, green spaces and the natural world are reducing. Full details here:

www.martineau-gardens.org.uk/2017/01/pledge-for-nature/

Connect with us ...

How to contact us

Martineau Gardens, 27 Priory Road, Edgbaston, Birmingham B5 7UG

T: 0121 440 7430 E: info@martineau-gardens.org.uk

www.martineau-gardens.org.uk

Book a school visit!



Pictured above, pupils take bark rubbings in our woodland (L) and learn about propagation in the glass house (R)

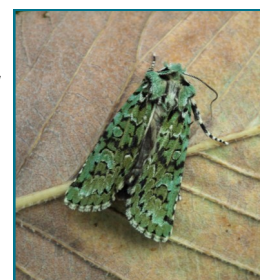
What do the children you know recognise most quickly? A bluebell, an acorn or the logos of Nike and Nintendo? As opportunities for children to connect with nature often appear to be shrinking, it is with great pleasure we can announce that our Environmental Education Programme is extending and expanding, thanks to funding from grant donor the Ernest Cook Trust, a leading educational charity. *This means that we have more sessions available for schools to book a visit.* Our teaching sessions are linked to the science programmes of study in the National Curriculum, and delivered by qualified teacher, Juliette Green (pictured above right). For more details about bringing a class to Martineau Gardens and the cost, see www.martineau-gardens.org.uk/education/

Many of the schools that visit Martineau Gardens benefit from a Hugh Kenrick Day bursary (administered by the NAEE) to pay for transport and teaching fees. Find out more here: www.naee.org.uk/apply-for-a-school-bursary/

New moth for Martineau Gardens

Martineau Gardens is not just a haven for people, but for wildlife too. We look after the biodiversity of the Gardens and record the species that visit here, with the help of wildlife volunteers, Brian Perry and Andrew Curran.

We have a new moth to add to our Species Lists, this beautiful moth is called 'Merveille du Jour', thanks to Andrew for photographing this.



Credit: A Curran

